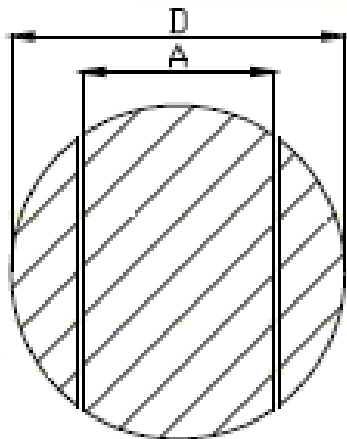
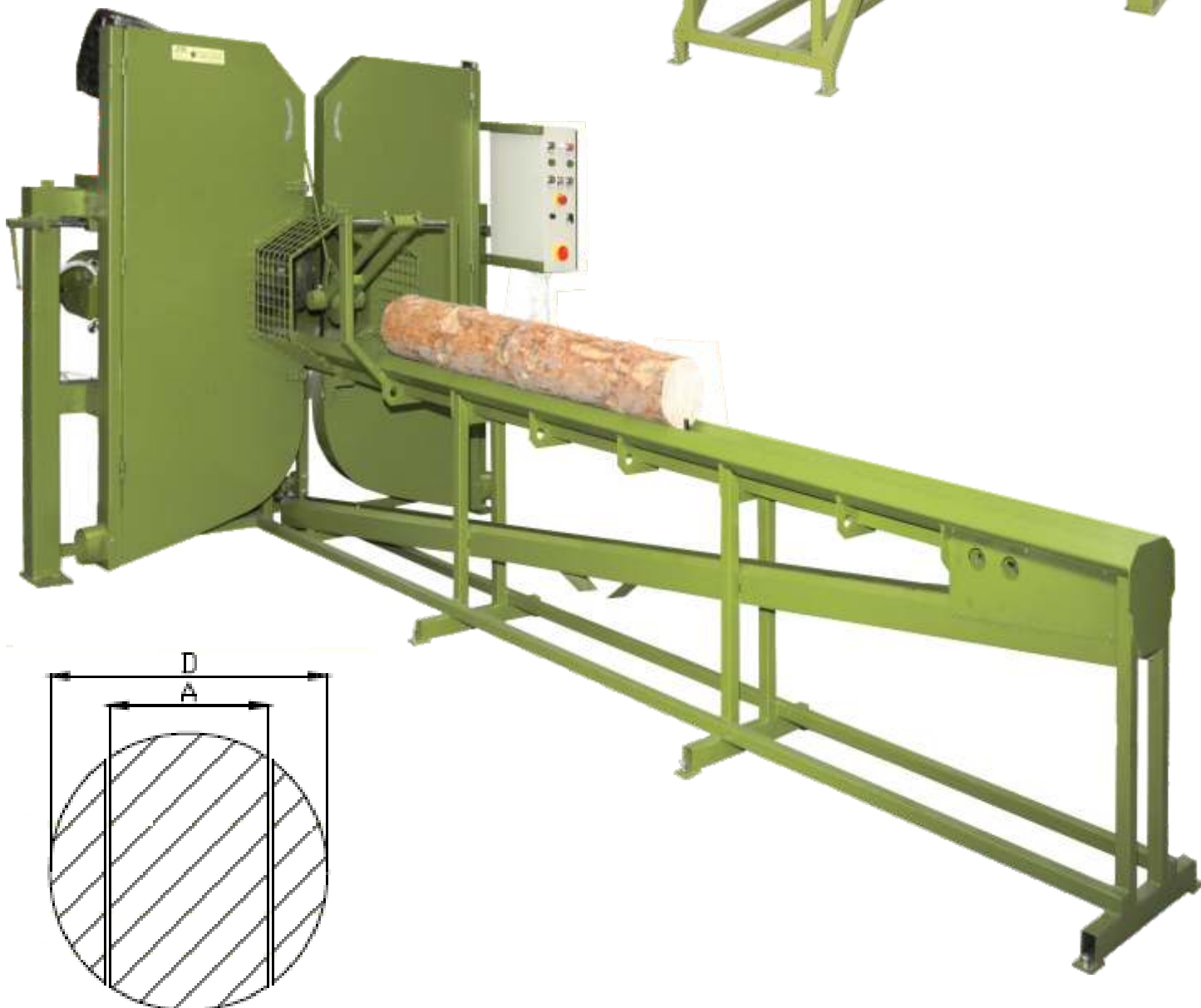


# PTP 2G vertical bandsaw



## Technical details:

Saw circumference	4 m
Wheel diameter	650 mm
Main engines	2 x 7,5 kW
Max. diameter of input material	400 mm
Max. length of input material	2,9 m
A cut width	80 - 300 mm
Smooth regulation of driver speed	2 - 18 m/min.
Two cutting headers with independent spacing adjustment	
Hydraulic saw tensors	



Machines for the sawmill industry